

# SOLA SERIES

Outdoor Lighting

**WESTGATE**  
THE FUTURE IS HERE...AND IT'S QUITE BRIGHT!

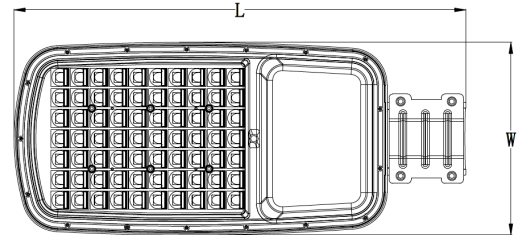
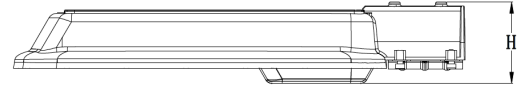
SOLA-SPLT-30W-50K  
ROADWAY AND AREA SOLAR LIGHTS

Customer Name: \_\_\_\_\_

Project Name: \_\_\_\_\_

Note: \_\_\_\_\_

Type: \_\_\_\_\_



19"(L) x 8 1/4"(W) x 3 1/2"(H)

Ideal for general site lighting, alleys, loading docks, doorway, pathway, and parking areas.

## Features

- Die-Cast Aluminum With Powder Coat Finish (Light Grey)
- Solar Panel, LED Lamp, Battery and Controller And Split Type Design.
- Lifespan: 70000 Hrs.
- Optical Lens: TYPE III High Light Transmittance PC, Anti-UV and Flame Resistant

## Technical Specifications

### Electrical:

- LED Wattage: 30W
- Power Factor: 0.95
- Efficacy: 150 LM/W

### Mechanical:

- No Wires
- Die-Cast Aluminum With Powder Coat Finish (Light Grey)
- Smart Lighting Controller & Remote Control To Charge Settings (Remote Is Not Included)
- EPA Rating: 0.26 Square Feet
- Operating Temperature: -4°F to 104°F
- IP Rating: IP65

### Battery:

- Battery Charge Time To Full Level: 6 to 12 Hours Depending On The Sunlight Quality, See The Map On Page 3
- Battery Type: LiFePO4
- Battery Life: More Than 2000 Cycles (2000/365days=5.47 Years) With Overcharge and Over-Discharge Protection
- Operation On Full Charge: 10 hrs. Depending On The Sunlight Quality, See The Map On Page 3

### Lighting:

- Dimming: Set Remote
- Optical Lens: TYPE III High Light Transmittance PC, Anti-UV and Flame Resistant
- LUMILEDS 2835 LED 150Lm/W
- Total Lumens: 4500LM
- Color Temperature: 5000K
- Color Rendering Index: >80
- Lifespan: 70000 Hrs.

### Applications:

- Ideal for Ideal for doorway, pathway and alleys

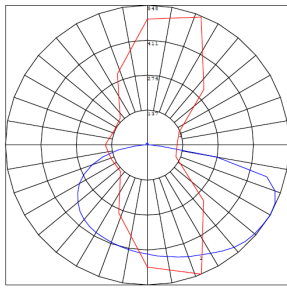
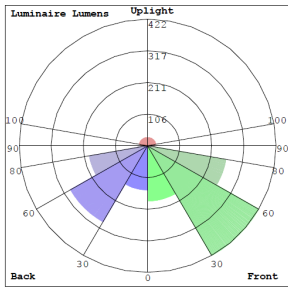
- The SOLA-RC remote control is needed per job. 1 remote control can control all the fixtures. order 1 per job. see the instruction on page 4



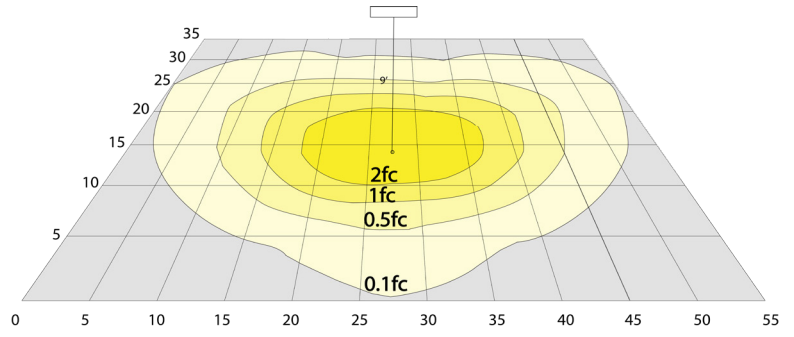
Phone: (877) 805-2252 | Fax: (877) 805-2252  
www.westgatemfg.com



## Photometrics: SOLA-SPLT-30W-50K



BUG Rating: B1-U2-G0



17W, 5000K Area 35'x 55' Mounting Height: 9'

## Other Views:



Shown with 2" Pole Top Mount, Sold Separately



Shown with Pole/Wall Mount Arm, Sold Separately



Shown with Pole/Wall Mount Arm, Sold Separately

## Performance Table: SOLA-SPLT-30W-50K

MODEL NO.	LED WATTS	Lumens	Color Temp.	BUG Rating	LPW
SOLA-SPLT-30W-50K	30W	4500LM	5000K	B1-U2-G0	150

## Sample Ordering

Model Style Min. Watt Color Temp.

SOLA - SPLT - 30W - 50K

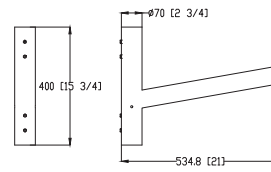
## Accessories

Blank = No Option  
 SOLA-SPLT-PM = POLE MOUNTING ARM FOR SPLIT SOLAR LIGHTS  
 SOLA-SPLT-WM = WALL MOUNTING ARM FOR SPLIT SOLAR LIGHTS  
 SOLA-RC = SOLA SOLAR LIGHT REMOTE CONTROL UNIT

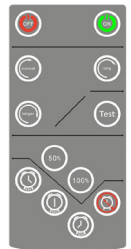
## ACCESSORIES:



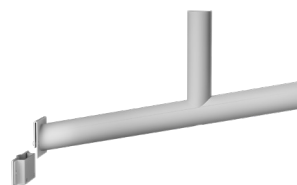
SOLA-SPLT-PM



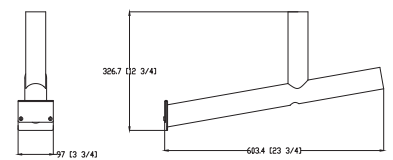
15 3/4"(H) x 21"(W) x 2 3/4"(D)



SOLA-RC



SOLA-SPLT-WM



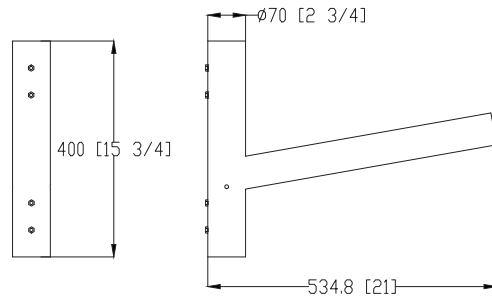
12 3/4"(H) x 23 3/4"(W) x 3 3/4"(D)



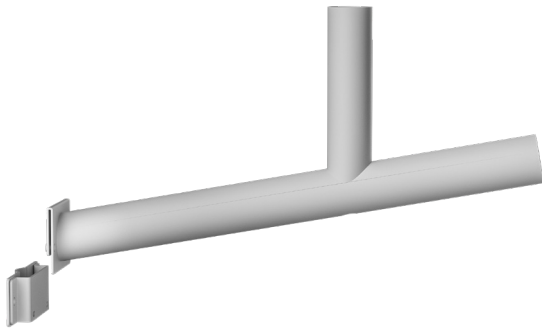
**ACCESSORIES:**



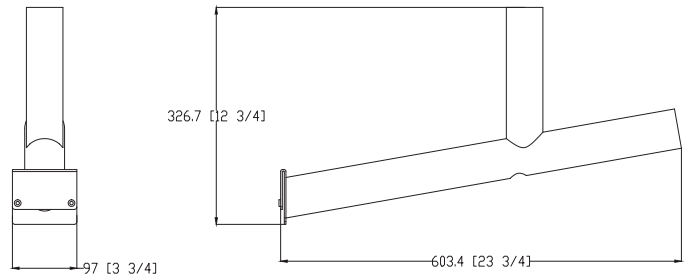
**SOLA-SPLT-PM**



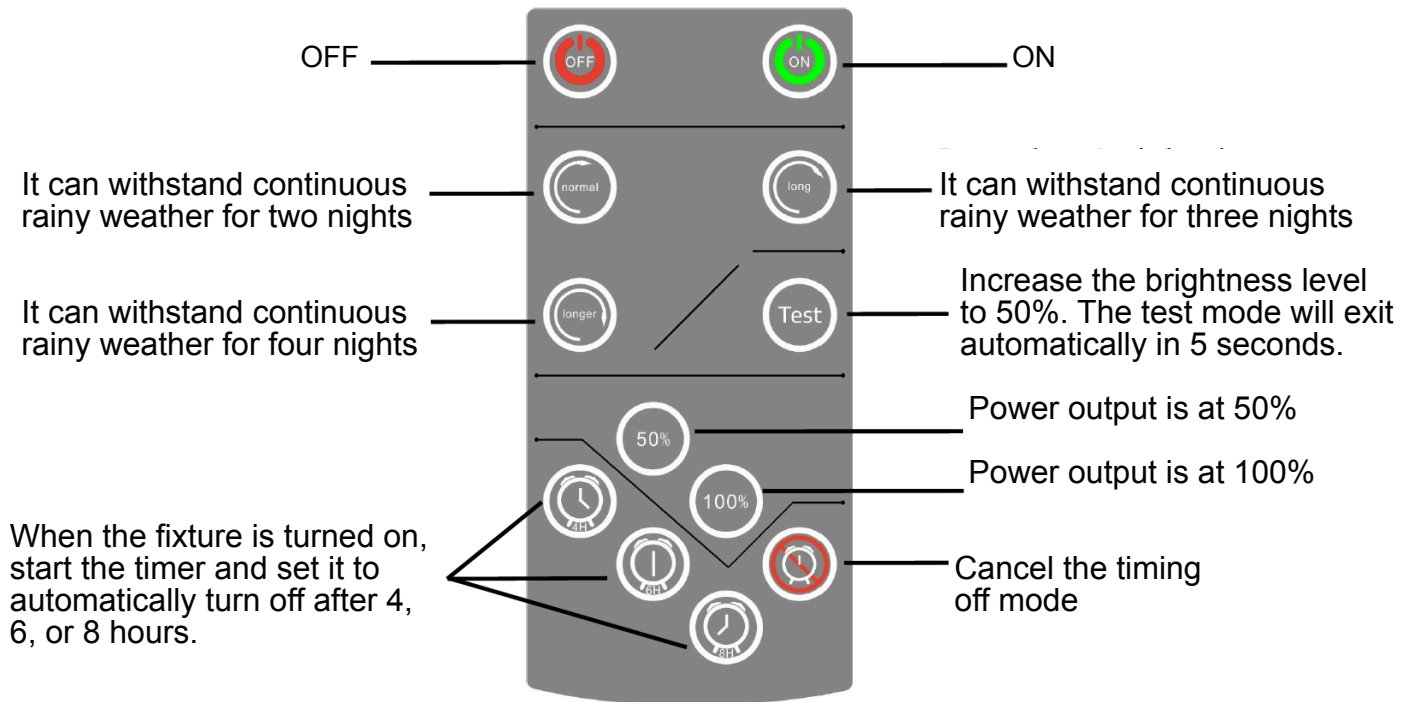
**15 3/4"(H) x 21"(W) x 2 3/4"(D)**



**SOLA-SPLT-WM**



**12 3/4"(H) x 23 3/4"(W) x 3 3/4"(D)**

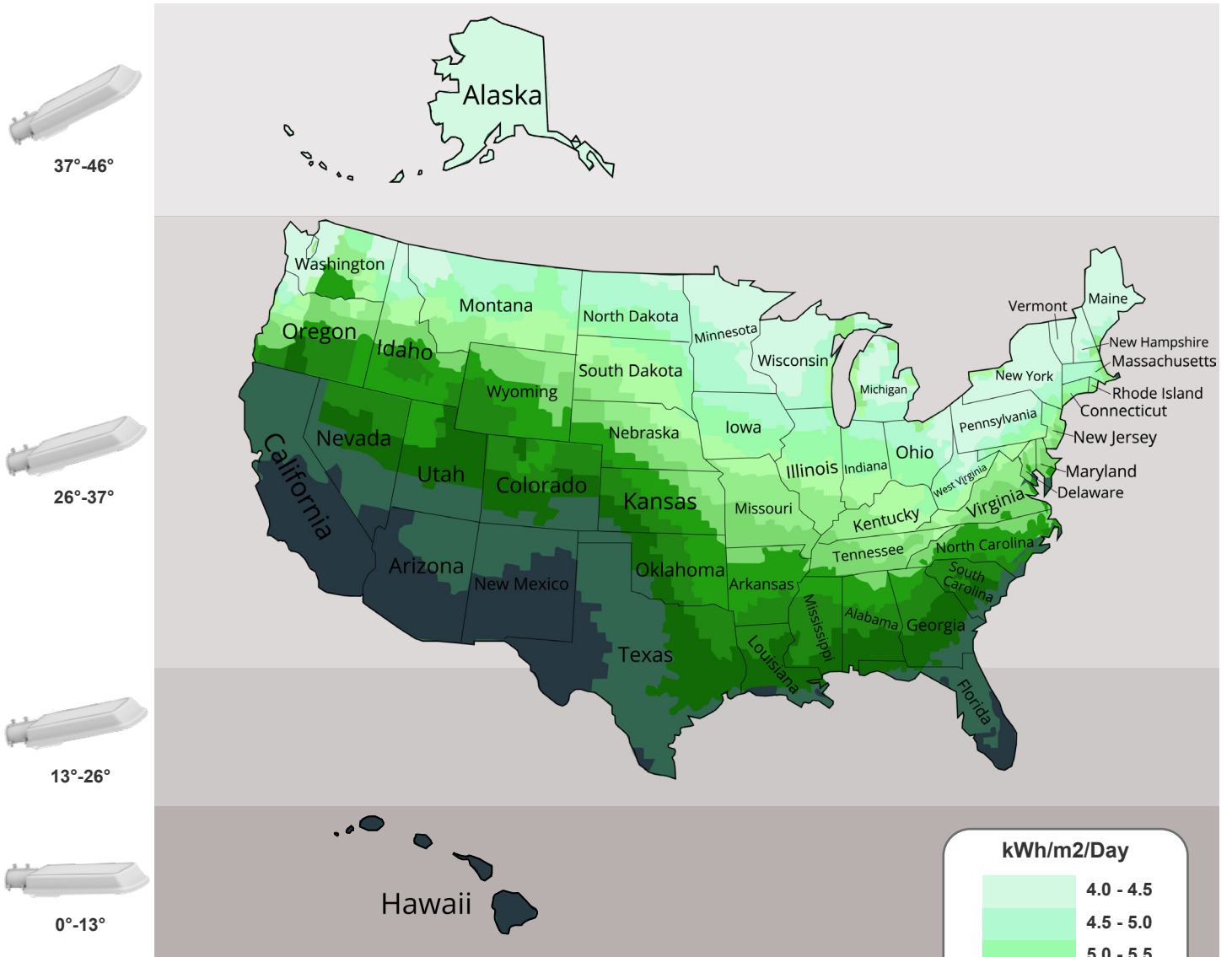


- **Dimensions: 4.53" x 2.17" x .59"**
- **Range: ≥8M (indoor dark environment), ≤3M (outdoor)**
- **Battery: 2 x AAA 1.5V. Function: Refer to picture**
- **Charge for 12 hours then discharge, 12 hours of working time**



# Average Daily Solar Radiation Per Month:

Increasing the tilt 15° in the winter or decreasing 15° in the summer gives the maximum sunlight for recharging the battery.



- The best facing direction for the solar panel is toward the south. facing west & east & north will provide less sunlight, resulting in a long time to charge the battery. The solar charge will be less optimal if the installation is facing north.

